

MONTHLY MEMBERSHIP PROGRESS REPORT

LOCATION INDONESIA

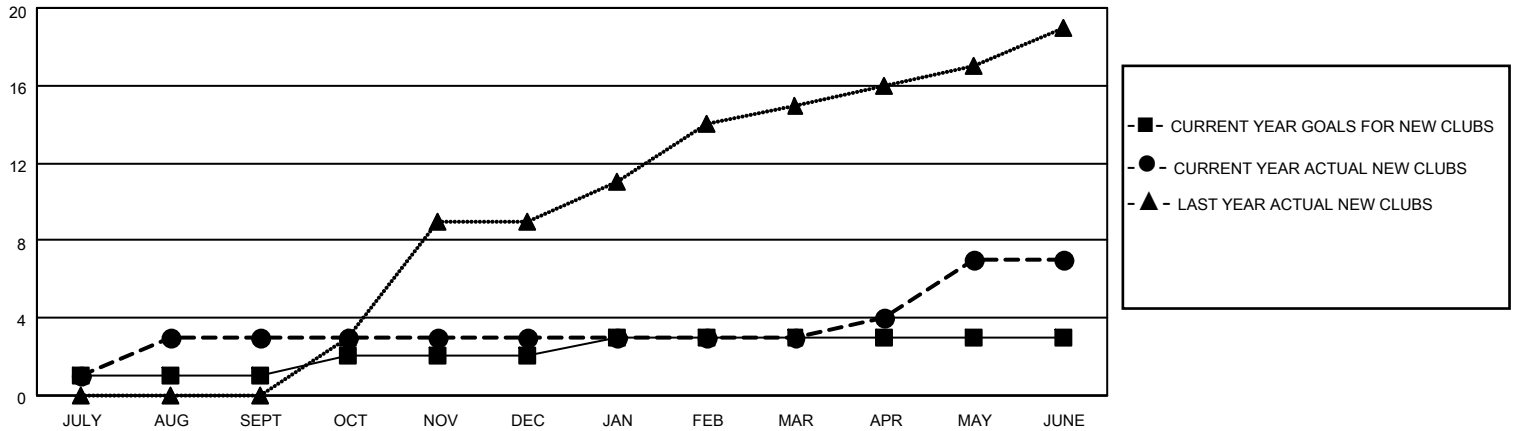
District 307 A1

Results as of: 6/30/2023

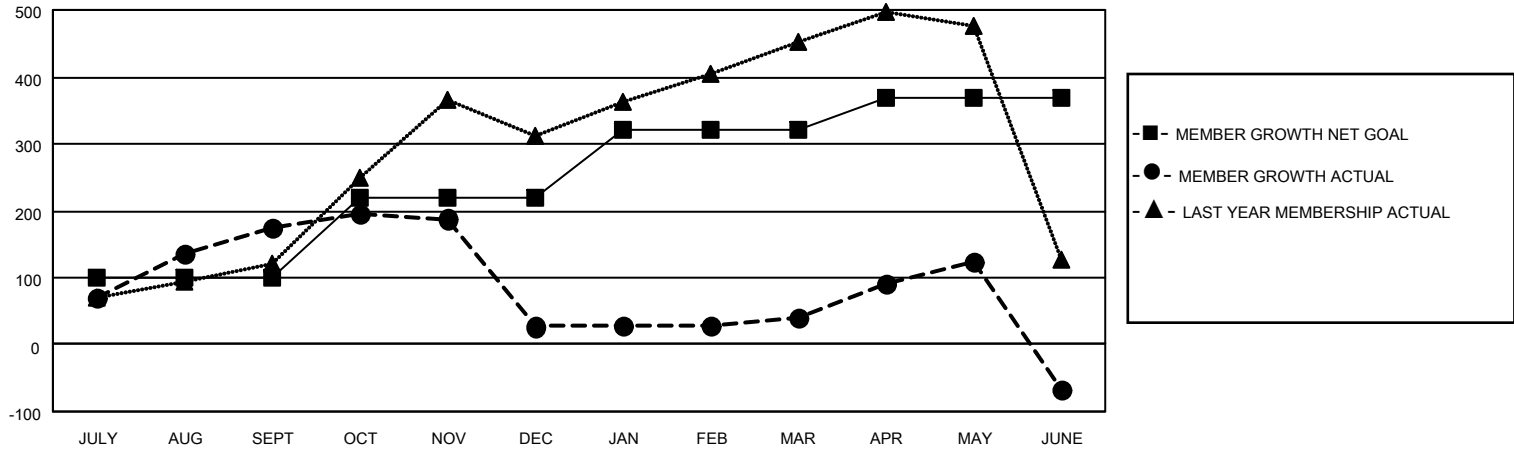
Clubs			
RESULTS FOR 2022-2023			
QUARTER	NEW CLUB GOAL	NEW CLUBS	DROPPED CLUBS
JULY/AUG/SEPT	1	3	2
OCT/NOV/DEC	1	0	0
JAN/FEB/MAR	1	0	1
APR/MAY/JUNE	0	4	2

Members			
RESULTS FOR 2022-2023			
QUARTER	MEMBER GROWTH NET GOAL	MEMBER GROWTH ACTUAL	DROPPED MEMBERS ACTUAL (including transfers)
JULY/AUG/SEPT	100	399	62
OCT/NOV/DEC	120	48	192
JAN/FEB/MAR	100	33	19
APR/MAY/JUNE	50	193	293

GOALS AND ACTUAL NEW CLUBS CUMULATIVE



GOALS AND ACTUAL MEMBERS CUMULATIVE



DROPPED CLUBS: 5	
DROPPED MEMBERS	
DECEASED	12
CLUB CANCELLED	15
OTHER	539
TOTAL	566

71 CLUBS OF 111 ADDED 1 OR MORE NEW MEMBERS

[CLICK HERE FOR CUMULATIVE MEMBERSHIP DATA](#)

<u>GENDER DISTRIBUTION</u>	
MALE	895 (36.70%)
FEMALE	1,544 (63.30%)
NON BINARY	0 (0.00%)
PREFER NOT TO ANSWER	0 (0.00%)
TOTAL FAMILY UNIT MEMBERS	736
FAMILY MEMBERS PAYING HALF DUES	439